

FOR LEASE

www.PaulHoweRealty.com

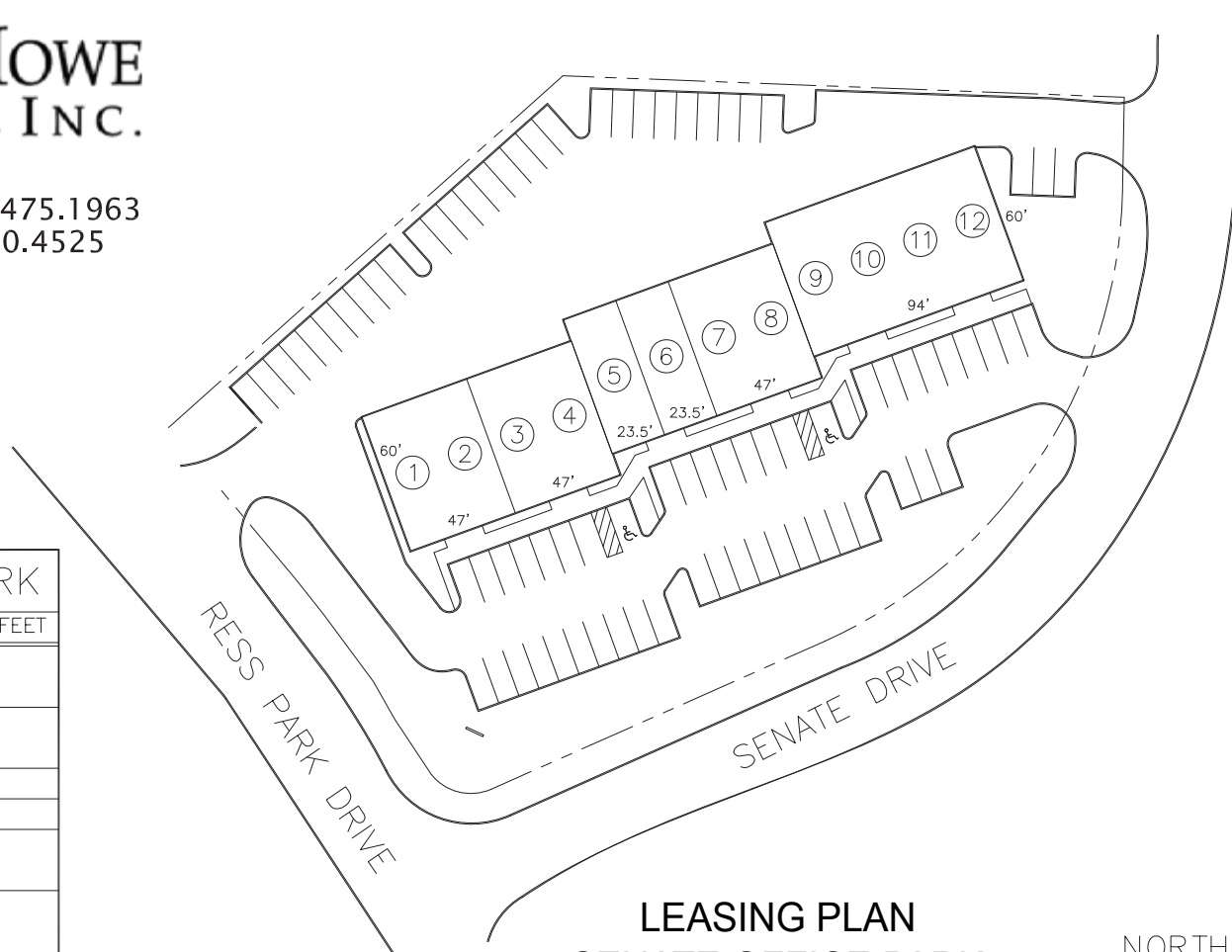
900-922 Senate Drive, Centerville, OH 45459



**PAUL HOWE
REALTY, INC.**

Paul Howe Direct: 937.475.1963
President Fax: 937.630.4525

paul@paulhowerealty.com
www.paulhowerealty.com



SENATE OFFICE PARK	
TENANT	SQUARE FEET
1. ITCN	2,820
2. DAYTON MEDICAL LAB	2,820
3. YOUR SOCIAL STATUS	1,410
4. DR. CHRIS PAVALAKOS PHD	1,410
5. KATE'S PLATE	2,820
6. CLARK'S Rx	5,640
7.	
8.	
9.	
10.	
11.	
12.	
TOTAL SQUARE FEET	16,920

LEASING PLAN
SENATE OFFICE PARK
900-922 Senate Drive
Washington Township, OH 45459



03/22/12

The information submitted herein is not guaranteed. Although obtained from reliable sources, it is subject to errors, omissions, prior sale and withdrawal from the market without notice.

Paul Howe Realty, Inc. | Paul Howe - Broker

Phone: 937.475.1963 | Fax: 937.630.4525 | Email: Paul@PaulHoweRealty.com