



PAUL HOWE  
REALTY, INC.



## FOR LEASE

www.PaulHoweRealty.com

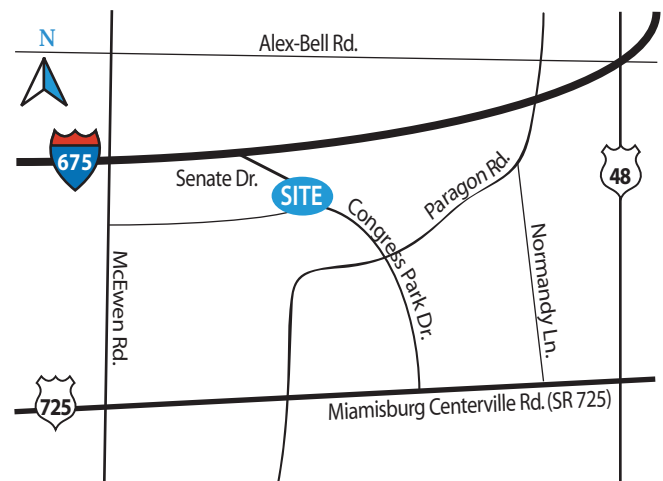
900-922 Senate Drive, Centerville, OH 45459



The information submitted herein is not guaranteed. Although obtained from reliable sources, it is subject to errors, omissions, prior sale and withdrawal from the market without notice.

### Senate Office Park

- There is no availability at this time for lease
- Located in Washington Township, OH
- No city income tax for employees
- IDEAL SOUTH DAYTON LOCATION with close proximity to I-675 and SR 725
- COMPETITIVE GROSS LEASE RATES
- NO LOCAL EARNINGS TAX due to township location
- BUILDING SIGNAGE available
- VERY WELL-MAINTAINED property with ample parking



Contact Paul Howe for more information.

Paul Howe Realty, Inc. | Paul Howe - Broker

Phone: 937.475.1963 | Fax: 937.630.4525 | Email: Paul@PaulHoweRealty.com

# FOR LEASE

www.PaulHoweRealty.com

900-922 Senate Drive, Centerville, OH 45459



The information submitted herein is not guaranteed. Although obtained from reliable sources, it is subject to errors, omissions, prior sale and withdrawal from the market without notice.

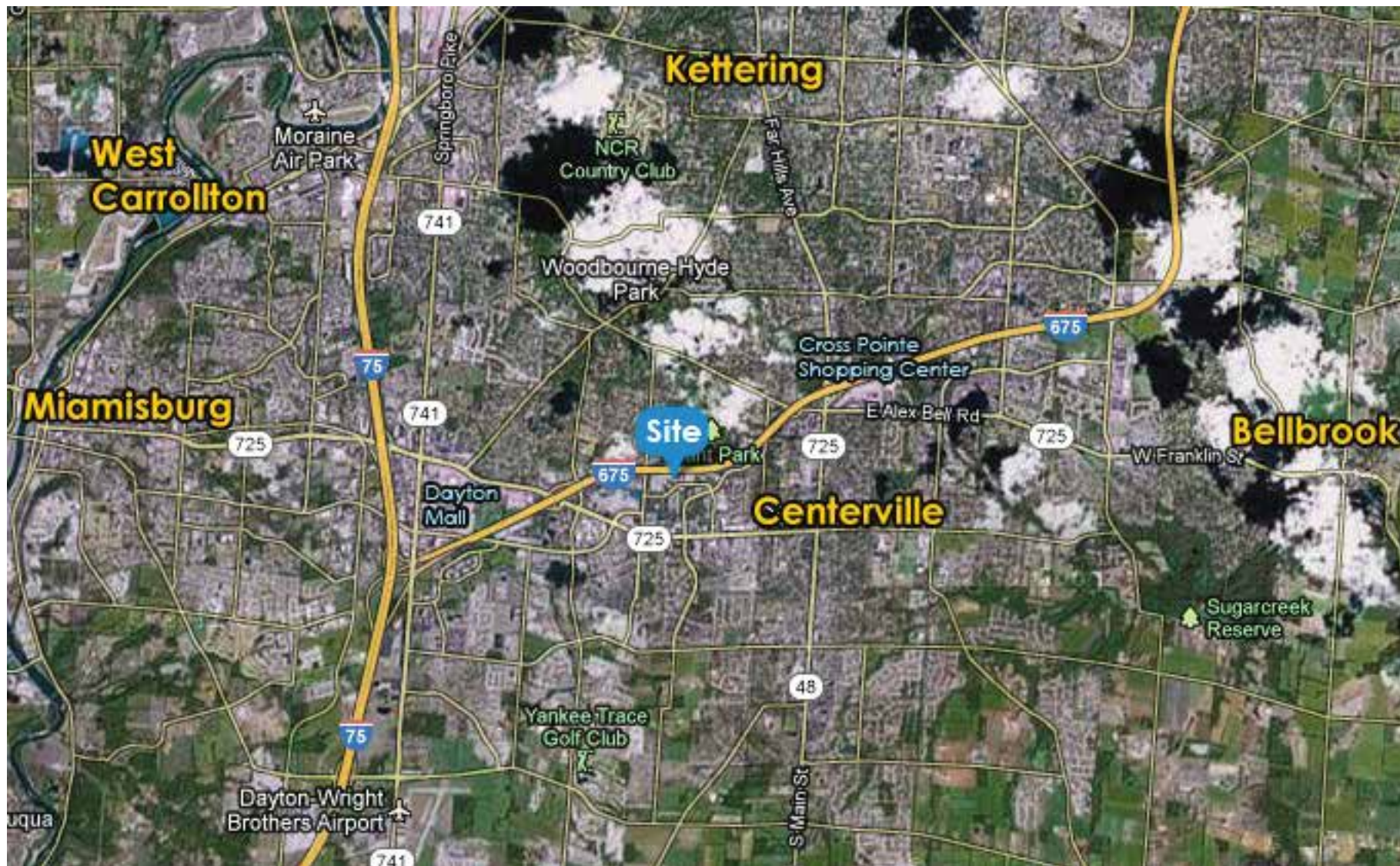
Paul Howe Realty, Inc. | Paul Howe - Broker

Phone: 937.475.1963 | Fax: 937.630.4525 | Email: Paul@PaulHoweRealty.com

# FOR LEASE

www.PaulHoweRealty.com

900-922 Senate Drive, Centerville, OH 45459



The information submitted herein is not guaranteed. Although obtained from reliable sources, it is subject to errors, omissions, prior sale and withdrawal from the market without notice.

Paul Howe Realty, Inc. | Paul Howe - Broker

Phone: 937.475.1963 | Fax: 937.630.4525 | Email: Paul@PaulHoweRealty.com

# FOR LEASE

www.PaulHoweRealty.com

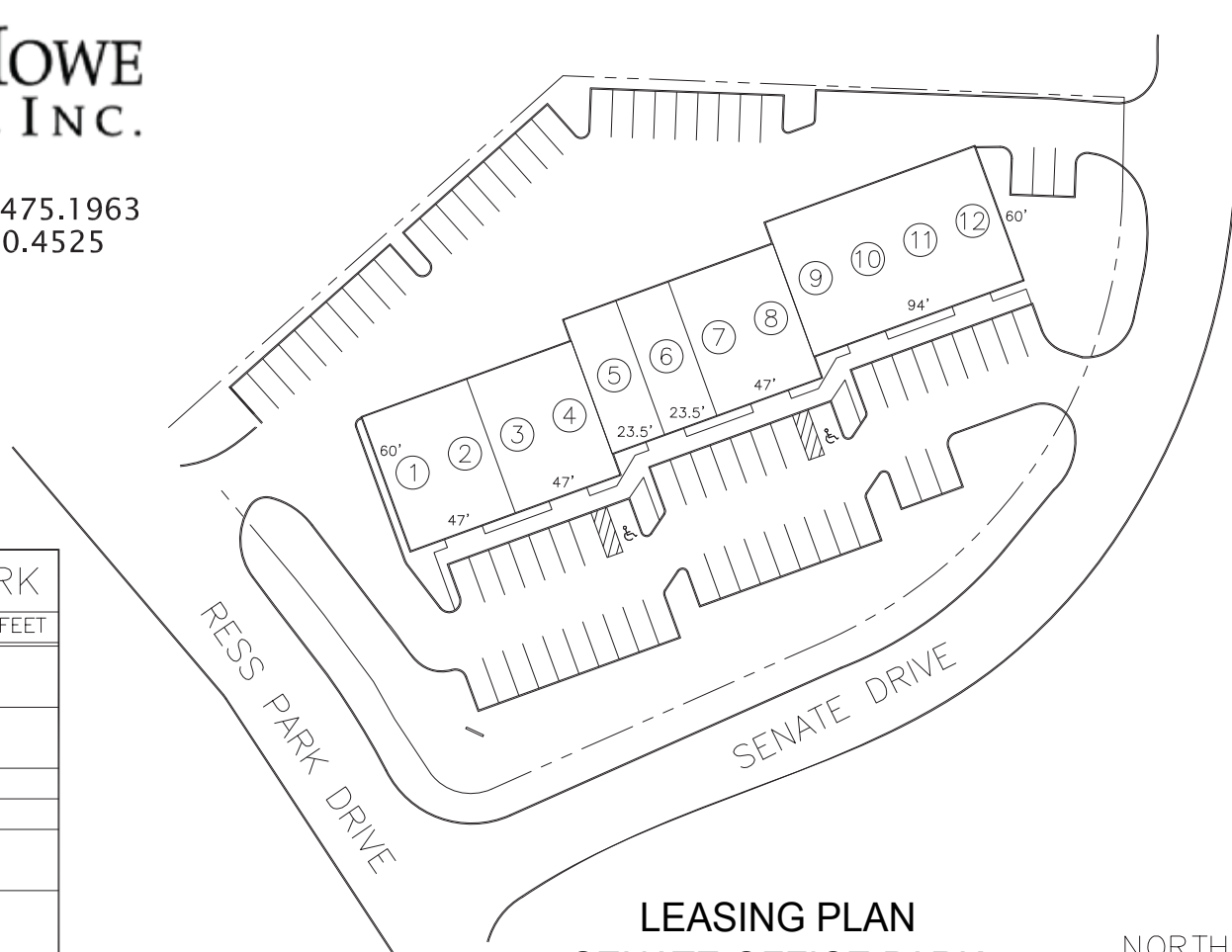
900-922 Senate Drive, Centerville, OH 45459



**PAUL HOWE  
REALTY, INC.**

**Paul Howe** Direct: 937.475.1963  
President Fax: 937.630.4525

paul@paulhowerealty.com  
www.paulhowerealty.com



SENATE OFFICE PARK	
TENANT	SQUARE FEET
1. ITCN	2,820
2. DAYTON MEDICAL LAB	2,820
3. YOUR SOCIAL STATUS	1,410
4. DR. CHRIS PAVALAKOS PHD	1,410
5. KATE'S PLATE	2,820
6. CLARK'S Rx	5,640
7.	
8.	
9.	
10.	
11.	
12.	
TOTAL SQUARE FEET	16,920

**LEASING PLAN**  
**SENATE OFFICE PARK**  
900-922 Senate Drive  
Washington Township, OH 45459



03/22/12

The information submitted herein is not guaranteed. Although obtained from reliable sources, it is subject to errors, omissions, prior sale and withdrawal from the market without notice.

Paul Howe Realty, Inc. | Paul Howe - Broker

Phone: 937.475.1963 | Fax: 937.630.4525 | Email: Paul@PaulHoweRealty.com